



LEWIS Model number: 46OWR28623AH18

3 beds • 2 baths • 1736 sq.ft. • 28' width • 62' depth

Our home building facilities invest in continuous product and process improvements. Plans, dimensions, features, materials, specifications and availability are subject to change without notice or obligation. Renderings and floor plans are representative likenesses of our homes and may differ from the actual homes. We invite you to tour a Home Center near you and inspect the highest value in quality housing available or call (828) 465-3450 to speak with a Home Consultant. Copyright 2017, CMH. All rights reserved.

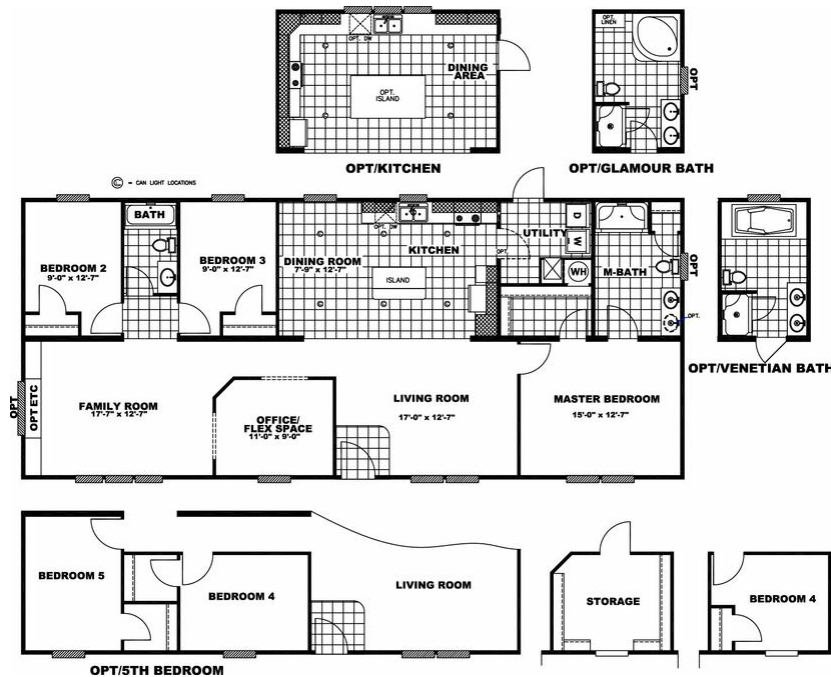
<https://www.claytonhomesofhickory.com>

**CLAYTON HOMES-
CONOVER**

**1230 CONOVER BLVD W
CONOVER, NC 28613**

Monday - Thursday: 9am - 7pm
Friday: 9am - 6pm
Saturday: 9am - 5pm
Sunday: Closed

(828) 465-3450



LEWIS Model number: 46OWR28623AH18

3 beds • 2 baths • 1736 sq.ft. • 28' width • 62' depth

Our home building facilities invest in continuous product and process improvements. Plans, dimensions, features, materials, specifications and availability are subject to change without notice or obligation. Renderings and floor plans are representative likenesses of our homes and may differ from the actual homes. We invite you to tour a Home Center near you and inspect the highest value in quality housing available or call (828) 465-3450 to speak with a Home Consultant. Copyright 2017, CMH. All rights reserved.

<https://www.claytonhomesofhickory.com>

CLAYTON HOMES- CONOVER

1230 CONOVER BLVD W
CONOVER, NC 28613

Monday - Thursday: 9am - 7pm
Friday: 9am - 6pm
Saturday: 9am - 5pm
Sunday: Closed

(828) 465-3450